

## PROVIDE THESE TOOLING SPECIFICATIONS

### TOOL TYPE:

- GROOVING     FACE GROOVING  
 BORING         THREADING

### ORIENTATION:

- RIGHT HAND     LEFT HAND

WIDTH ('A'): \_\_\_\_\_  
 (.004" MINIMUM)

SHANK DIAMETER ('B'): \_\_\_\_\_  
 (1/8", 3/16", 1/4", 5/16", 3/8", 1/2")

### MINIMUM

BORE DIAMETER ('C'): \_\_\_\_\_  
 (.073" MINIMUM SUGGESTED)

OVERALL LENGTH ('D'): \_\_\_\_\_  
 (.875" MINIMUM, 4" MAXIMUM SUGGESTED;  
 STOCK LENGTHS MAY BE SUBSTITUTED)

REACH ('E'): \_\_\_\_\_  
 (.250 MINIMUM, 4 TIMES 'B' MAXIMUM SUGGESTED)

PROJECTION ('F'): \_\_\_\_\_  
 (3 TIMES 'A' MAXIMUM SUGGESTED;  
 FOR THREADING TOOL, SPECIFY THREADS PER INCH)

MATERIAL BEING MACHINED: \_\_\_\_\_

### COATING OPTIONS:

- TIN         TiCN  
 TiAlN     DIAMOND

Submitting this form will generate a quotation within 48 hours which will include price, delivery and CAD drawing(s) for your review and approval. If you would like additional assistance include your application print or sketch.

Return quotation to:

Name: \_\_\_\_\_

Company: \_\_\_\_\_

Address: \_\_\_\_\_

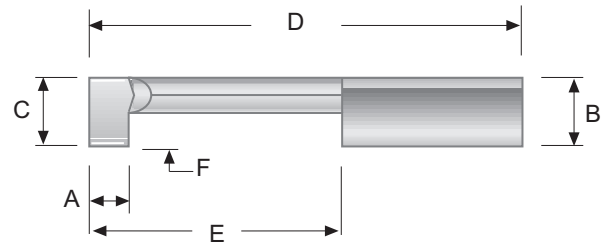
Phone: (\_\_\_\_) - \_\_\_\_ - \_\_\_\_\_

Fax: (\_\_\_\_) - \_\_\_\_ - \_\_\_\_\_

Email Address: \_\_\_\_\_

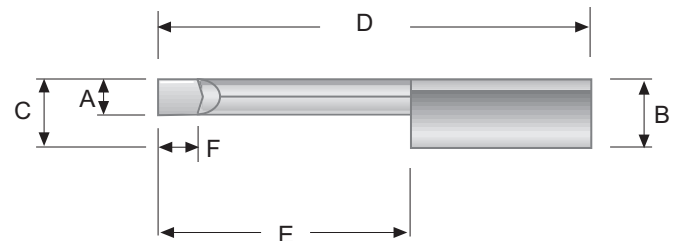
### Grooving Tool Geometry

Right hand shown. See Page 1-4 for standard cutting geometry.



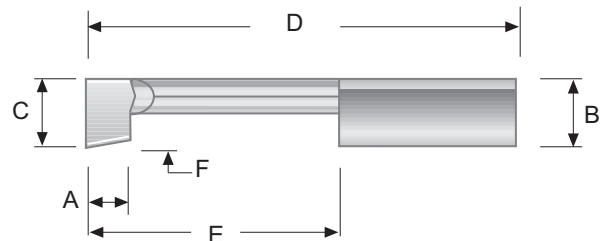
### Face Grooving Tool Geometry

Clockwise shown. See Page 2-4 for standard cutting geometry.



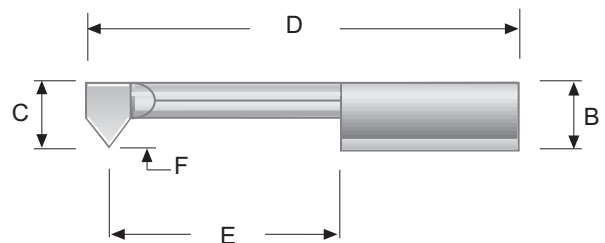
### Boring Tool Geometry

Right hand shown. See Page 3-4 for standard cutting geometry.



### Threading Tool Geometry

Right hand shown. See Page 4-4 & 4-6 for standard cutting geometry.



CUSTOM BLANKS  
MODIFICATIONS

## KAISER TOOL COMPANY, INC.